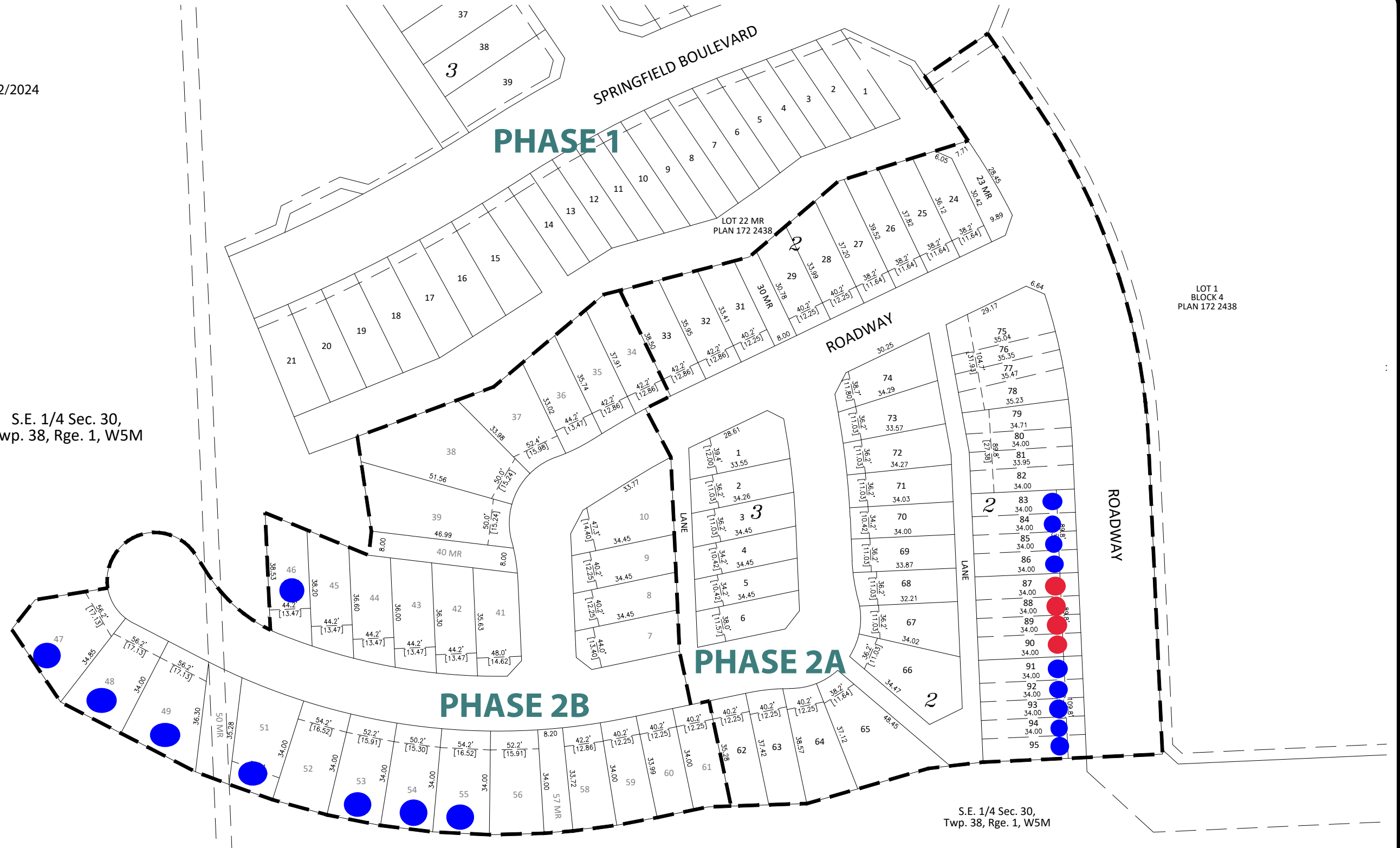


UPDATED: May 2/2024

- HOLD
- SOLD

S.E. 1/4 Sec. 30,
Twp. 38, Rge. 1, W5M



Phase 2
 Lotting Plan
 Waterford Station

Prepared for:
 Blackstone
 Developments Inc.

DRAWN BY: SAS
 CHECKED BY: GCL
 SCALE: NTS
 PROJECT #: 112849657

October, 2022